

# Oakhill Primary Academy

## SEND Information Report for Parents & Carers.

September 2024

### What do I do if I think my child may have Special Educational Needs?

At Oakhill Primary Academy, we are committed to ensuring that children who benefit from additional support in order to thrive throughout their school life and beyond are fully supported in their daily endeavours. We are also fully committed to working with our families to help them access the right support for their child.

When your child starts school with us, you will have the opportunity to meet with staff and we encourage you to share with us any information you have about your child that will help us to settle them into the academy, including any information you have about your child's particular needs. If there are other agencies already involved with your child when they start school, please let us know so that we can work with them to provide the best support for your child.

Once your child has started school, your child's class teacher will be the first point of contact for you. You can arrange to speak with your child's class teacher as soon as you have any questions or concerns about your child's learning, progress and wellbeing in school.

### Who can I contact if I feel my child needs extra support?

You are welcome to speak directly with the Principal about your child – appointments can be made through the school office. You can also speak with the following teams who can support you and your family.

#### The Vice Principal/SENDCo:

Mrs Jo Gibbons

01226 284493

[j.gibbons@oakhillacademy.org.uk](mailto:j.gibbons@oakhillacademy.org.uk)

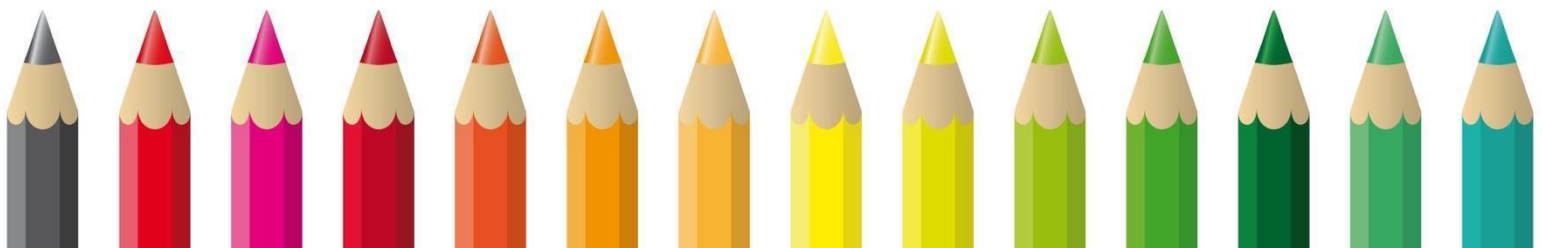
#### Family Support/Learning Mentor

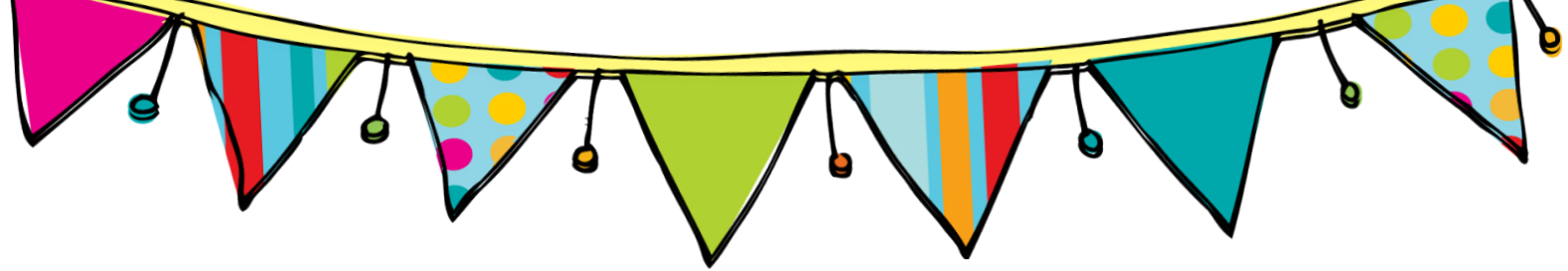
Mrs Paula Edwards

01226 284493

[p.edwards@oakhillacademy.org.uk](mailto:p.edwards@oakhillacademy.org.uk)

Arrangements will be made for a meeting where school will listen carefully to concerns and put appropriate actions in place. In the first instance, this may involve observation and assessment in school and additional support within the classroom. We also have access to a range of services within the local area which we can signpost or refer you to.





## What different SEND needs are supported in school?

Firstly, we know that children are individuals. We recognise that all children are different, and learn in different ways. We support this through adapting teaching and learning throughout the curriculum and tailoring support to individual needs. In line with the SEND Code of Practice, we recognise the four areas of SEND as Communication and Interaction (including Autistic Spectrum Condition), Cognition and Learning, Social Emotional and Mental Health and Sensory or Physical Needs. We can support children with their individual needs right across this spectrum, and will work closely with you to tailor support for your child. If your child has medical needs, we will also work with you and any health professionals involved with your child to ensure that these needs are fully understood and supported.

## How will school support my child?

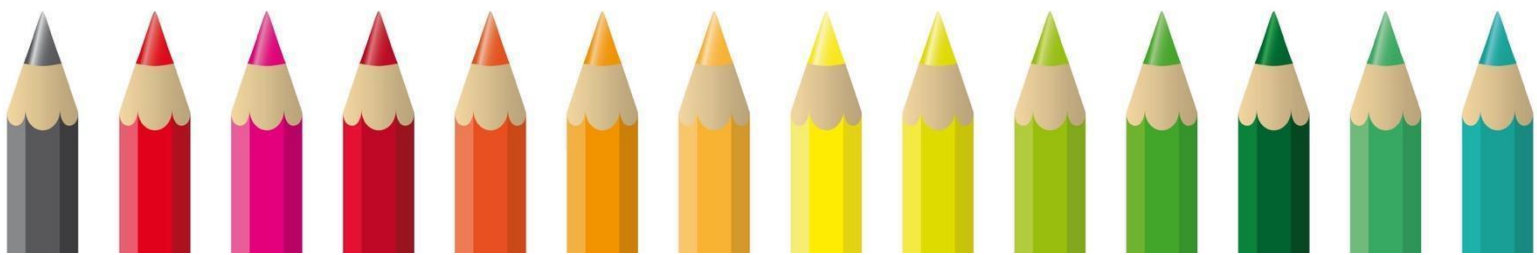
At Oakhill Primary Academy, excellence is achieved through the delivery of an inclusive curriculum, taught in a modern, well-resourced and stimulating environment by passionate, gifted and highly committed teachers and staff. We do not impose glass ceilings on children's learning and we see every child, not for what they are but what they CAN be. All children are encouraged to reach their potential, regardless of their gender, religion, culture, ethnicity and abilities. In order to achieve this, the school is committed to working in partnership with parents in order to put a provision in place around the child that best meets their needs.

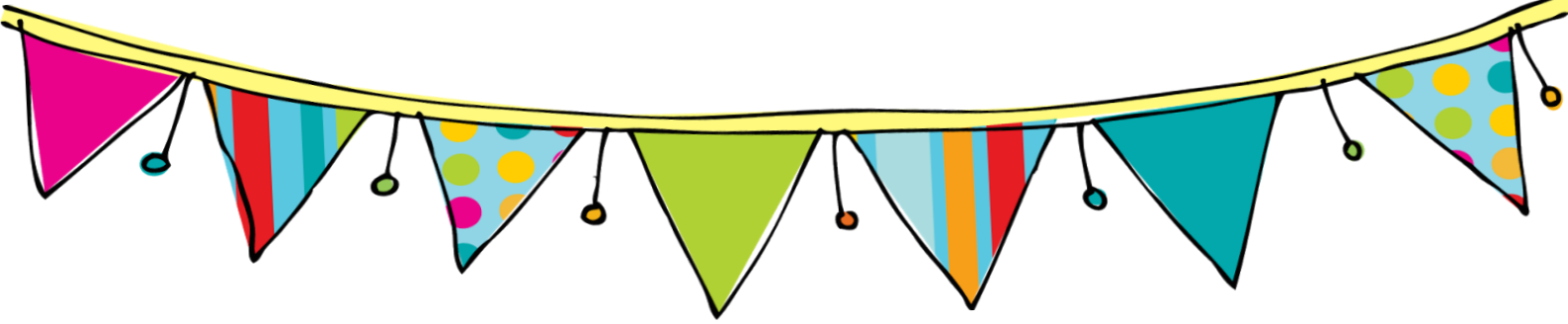
Your child will benefit from Quality First Teaching across a broad and balanced curriculum, and will have access to a wide range of experiences that may be new for your child. It is our belief that a child who is enjoying school life is one who is securing fantastic progress in their academic journey, and it is our aim to enable every child to achieve in line with their peers. What will my child learn in the classroom?

The academic progress and well-being of all children is monitored closely and, if your child's progress has slowed or we are worried about your child's wellbeing within the school environment, we will speak with you about the support we can put in place.

When an additional need has been identified, the class teacher (supported by phase leaders and the SENDCO) will prepare a support plan setting out clear targets and strategies to help your child. Either this provision will be provided by class teachers and support staff individually or as part of a group and will be reviewed three times a year by the class teacher and discussed with both you and your child, so that – together – we can acknowledge our successes and agree some targets for the next plan.

Where progress against the targets within the plan has not been made, the class teacher will meet with the SENDCO to discuss additional strategies and a possible referral to external agencies, such as Educational Psychology, Speech and Language Therapy, Occupational Therapy or the Social, Communication and Interaction Team. We will work with you to identify the agencies that can offer us both the best source of advice and support for your child, and to make sense of the advice and support which they provide for us to be implemented at home and at school.





### What if my child still needs extra support?

Some children with complex needs require a higher level of support to access learning. If your child is still not making progress, despite SEN support within school and advice from external agencies, the SENDCO may discuss an application for an Education, Health and Care Plan (EHCP) with you. This is especially important where there are a number of health professionals working together to support your child, as it compiles all the information and provision needed to support your child to make progress within a mainstream or specialist school setting. Securing an EHCP is a time-consuming process as it requires lots of information and advice gathered over time. We will help you to identify the right time for this process to begin, if it is an appropriate next step for your child.

### Looked after pupils

Where a looked after child is being assessed for SEN, we will take account of information set out in the Care Plan. SEN professionals work closely with other relevant professionals involved in the child's life as a consequence of his/her being looked after.

These will usually include medical professionals, social care and the virtual school to ensure provision is coordinated.

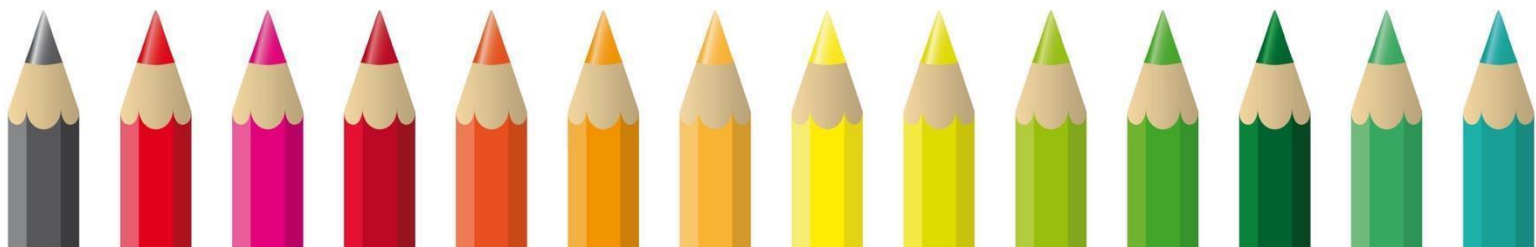
### My child has social, emotional or mental health issues. What can you do to help?

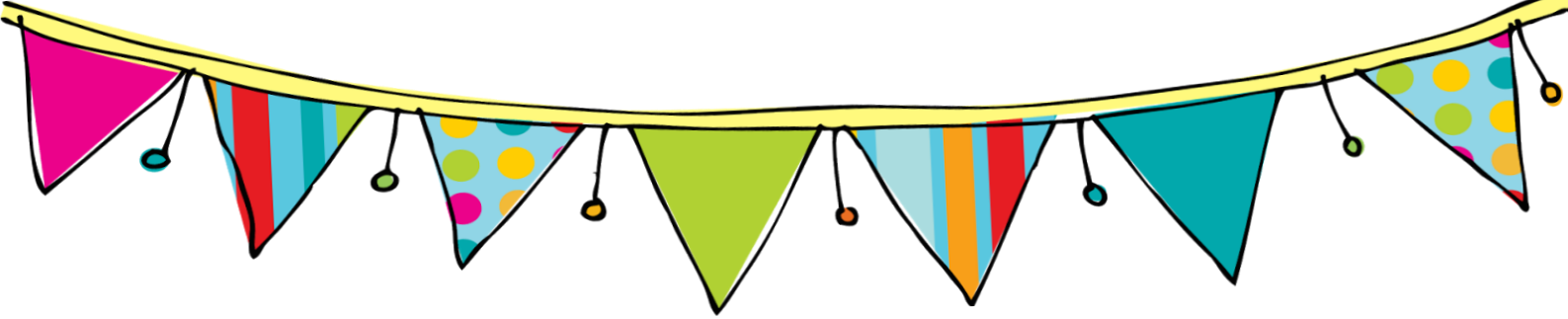
Oakhill Primary Academy ensures that all staff receive up to date training and that there are designated staff to deal with pastoral care. Senior Leaders support the SENCO, Learning Mentor and Family Support Worker/Learning Mentor to ensure that all children feel safe and supported and can access their learning despite any pastoral issues.

Our Behaviour Policy and Anti Bullying Policy is available to view on the website and provide a clear framework for all staff to work within. Our approach is one of high expectation, underpinned with empathy, understanding and relationships with children and their families. We believe that all children are able to meet the academy expectations in their behaviour and learning with the right support from parents and school staff. We will also help you to identify the right external agencies who can provide support to you and your child. Together, we can ensure every child is able to 'be the best they can be'.

### Things can be really tough sometimes, can school offer me any support so I can support my child?

Yes, we certainly can. Our Family Support/Learning Mentor, works closely with families who would like some additional help or advice. Mrs Edwards can link you up with other organisations in the local area to make life a little bit easier. This might be referrals to support groups, advice or next steps in an area that is troubling you, or just for a chat.





### What training do staff supporting my child receive?

At Oakhill Primary Academy, we believe in the best-qualified practitioners working with the children who need the most support. Class teachers are responsible for the educational outcomes of every child and will be directly involved in the teaching and learning of all children with SEN, and they will work in close partnership within a team that includes teaching assistants, a family support worker, Key Stage leaders and the SENCO.

All staff are trained to use a variety of strategies to support children with different SEND so that they can support pupils with a wide range of needs. We have a strong focus on the professional development of all staff in leading high quality teaching and learning opportunities for all pupils. Where a child's needs have been identified in consultation with external agencies, we will always ensure that specific training has been given to enable the teaching team to meet their needs confidently. Training may be provided by the SENDCO or external agencies, where appropriate.

The SENDCO has completed the National Award for SEN Co-ordination and, alongside the other Barnsley Primary Partnership SENDCOs, regularly attends network meetings and further training to ensure that school is kept up-to date.

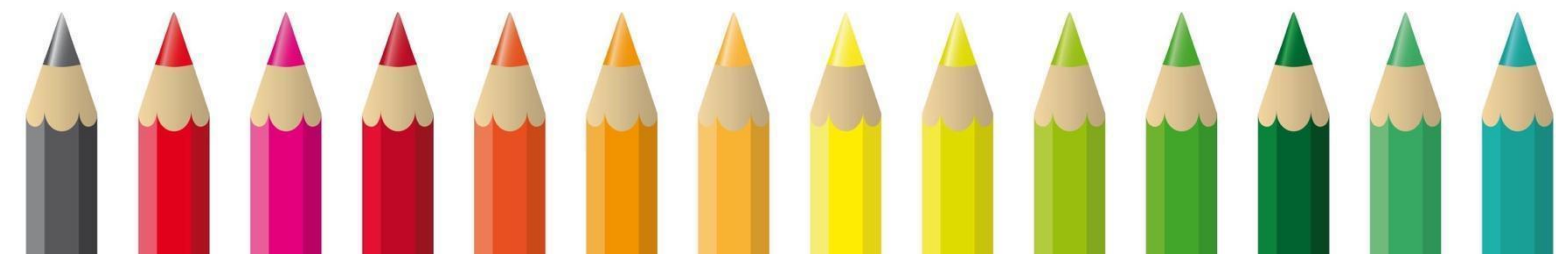
### How will my child be included in activities outside of the classroom?

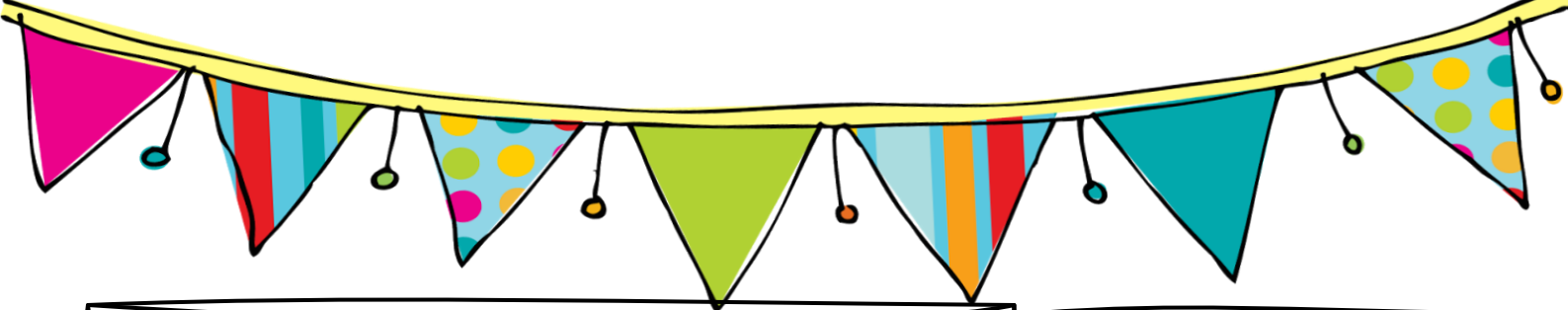
At Oakhill Primary Academy, we believe that all children should have a wide range of experiences to help them grow and develop. We ensure that ALL children are able to access school trips and residential.

Where appropriate, we will invite parents into school to discuss what provision is needed to make these activities accessible and we will work closely with you and external providers to adapt activities and prepare specialist risk assessments where needed. All children are encouraged to attend extra-curricular activities, any additional support required to access these can be discussed with the SENDCO.

### How accessible is the school?

The school buildings and playground are fully accessible for all children including those with wheelchairs. More specialised equipment and resources are deployed as appropriate to meet the needs of specific children. This may include adaptive furniture, ICT equipment or visual timetables to ensure that children can appropriately access their learning. For further information, please see the School's Accessibility Plan.





### **Oakhill Primary Academy – Resourced Provision**

Oakhill Primary Academy includes an 8 place, short-term (4 terms) specialist Resourced Provision for children with Developmental Language Disorder.

These children are referred through Barnsley children’s speech and language therapy department. It is expected that these children can make accelerated progress with their speech and language through intensive speech and language therapy and access to specialist teaching.

If children meet the criteria for referral, then their school will complete the referral entry paperwork with parents/ carers. This is then discussed at one of the regular Steering Group meetings held at Oakhill school. These involve staff from Oakhill Academy and from the local authority. The child’s school is then notified of the decision and transition arrangements are put in place to allow the placement to begin. During the placement there are half termly meetings led by the Resourced Provision Lead Teacher, the speech and language therapist and the SENCo at Oakhill Academy with the parents/carers and SENCo of the original school. The placement is for up to 4 terms after which the children, after a period of transition, are expected to return to their original school.

### **How are school resources allocated and matched to my child’s SEND needs?**

First and foremost, funding is prioritised to ensure that there is accessibility to the Curriculum for ALL pupils, including those with SEND. This may mean that school needs to purchase specialist equipment and learning resources. Staffing needs to be well considered and children’s individual needs catered for. Oakhill Primary Academy often takes the guidance from outside agencies who can offer us expert advice.

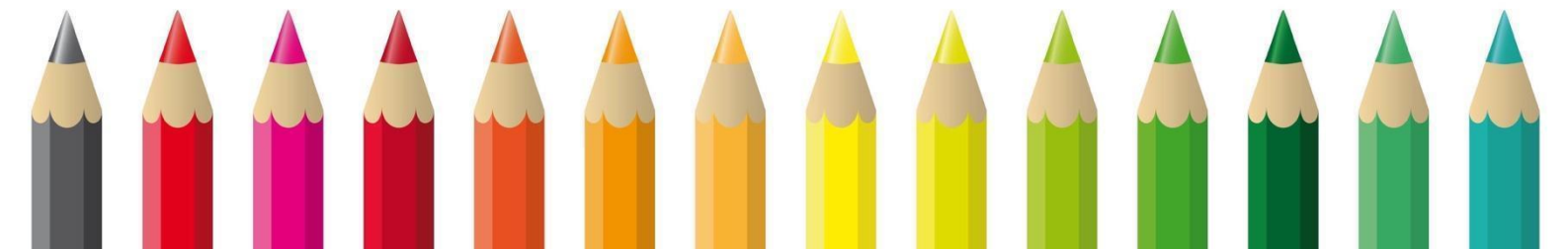
### **What external agencies does Oakhill Primary Academy use to support children with additional needs?**

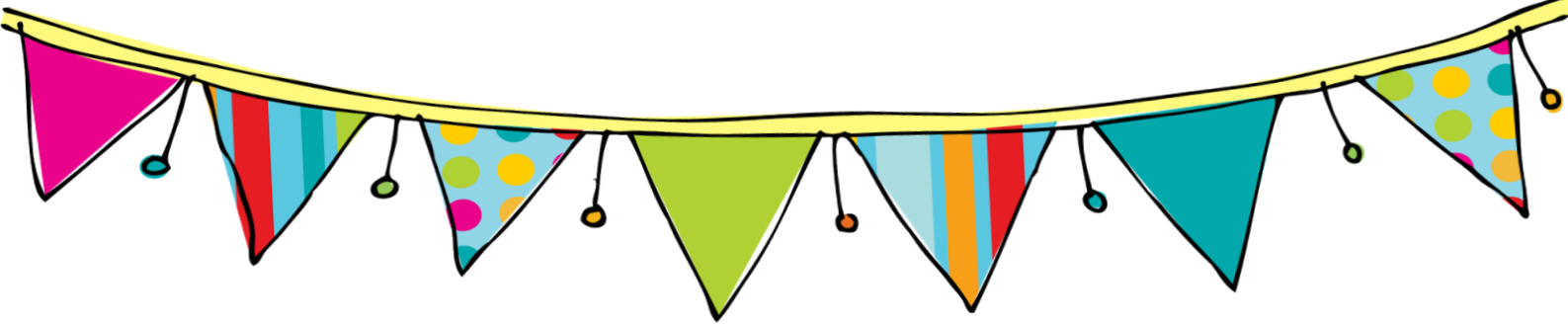
Oakhill Primary Academy works closely with a range of external agencies to help support your child through specialist assessments, advice and training.

If school feel that further support and advice is needed to meet a child’s needs, parents will always be informed and consent gained, and any reports or advice will be shared with you. Professionals may visit school to work directly with your child or meet with staff and parents to discuss support.

The most frequent services that we use are:

- NHS Speech and Language therapy
- Fresh Start Kids (Occupational Therapy)
- CAMHS (Child and Adolescent Mental Health)
- Educational Psychology
- Health Visitors and School Nursing team
- Social, Communication and Interaction team
- Hearing Impaired
- Child Protection/Social Care team





## How will my child's information be shared with new phases or new schools?

We recognise that transitions can be difficult for a child with SEND so we take steps to ensure that any transition is as smooth as possible.

### Children entering school in Nursery or Reception:

All children are offered home visits before they start in our Foundation Stage and transition sessions in EYFS are arranged so that children have the opportunity to visit before starting. These give you the opportunity to discuss any concerns or additional needs that your child may have. The class teacher and SENDCO will liaise fully with you and any professionals working with your child in order to meet their needs when they arrive in school. Additional visits can be arranged if necessary.

### If your child is moving to or from another school:

We will contact the school SENDCO and ensure that all information regarding additional support or special arrangements are shared. We will make sure that all records about your child are securely passed on as soon as possible.

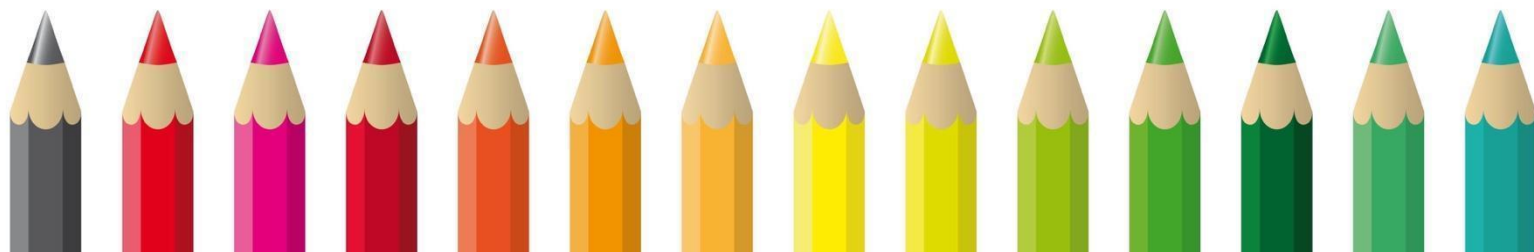
### When moving classes in school:

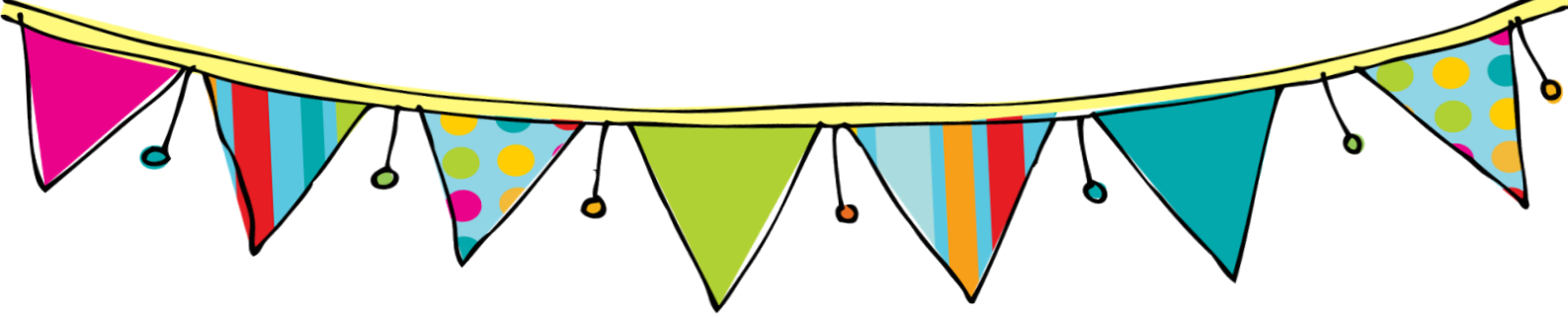
Information will be passed onto the new class teacher and a planning meeting will take place with the new teacher where all relevant information will be shared. SEN support plans will be reviewed before the end of the summer term to ensure that these are up-to-date before transition.

## In Year 6:

We recognise that the move to secondary school is a difficult time for some children and staff in school work hard with the children to prepare them for the move and reassure them that it is a positive step.

During the summer term, staff from the secondary schools visit pupils in school and meet with Y6 teachers. The SENDCO meets with SENDCOs from all of the secondary schools to discuss individual pupil needs and plan any additional transition visits. Different secondary schools have different transition arrangements and these will be discussed with you at the time. All relevant support plans and reports are passed securely to the secondary school to ensure that support is in place when your child starts.





### What can I do if I am not happy about the support my child is receiving?

At Oakhill Primary Academy, we are always open to feedback and are committed to ensuring we get the provision right for your child. If you have any concerns, please speak to the class teacher in the first instance as most difficulties can be resolved in this way. If you feel you need further advice, please arrange an appointment with the SENDCO or Principal who will work with you to support your child. We have a clear complaints policy that can be found on our website to formalise your complaint. We will ensure we respond promptly to your concerns to find a resolution to quickly meet the needs of your child.

### Who can I contact for further information in school?

You can arrange to make an appointment with any of the key people listed below on 01226 284493.

Lisa McCarthy—Principal

Jo Gibbons—Vice Principal/SENDCo – [j.gibbons@oakhillacademy.org.uk](mailto:j.gibbons@oakhillacademy.org.uk)

Paula Edwards—Learning and Family Support Mentor and Thrive Practitioner– [p.edwards@oakhillacademy.org.uk](mailto:p.edwards@oakhillacademy.org.uk)

Tom Oates—SEND Governor

### Who can I contact for further advice outside of school?

Further support with SEND provision in schools can be found through SENDIASS (SEND Information Advice Support Service for parents on: 01226 787234

Or email [SENDIASS@barnsley.gov.uk](mailto:SENDIASS@barnsley.gov.uk)

They also have a website and Facebook page:

[www.barnsley.gov.uk/sendiaass](http://www.barnsley.gov.uk/sendiaass)

[www.facebook.com/BarnsleySendiaass](https://www.facebook.com/BarnsleySendiaass)

Further information about services for pupils with SEND in Barnsley can be found on the Local Offer page

[https://barnsley.cloud.servelec-synergy.com/Synergy/Local\\_Offer/](https://barnsley.cloud.servelec-synergy.com/Synergy/Local_Offer/)

Or email: [info@barnsley.gov.uk](mailto:info@barnsley.gov.uk)

### What are the key policies the schools work towards to keep my child safe?

The following policies are on the school websites and reflect the school's commitment to the inclusion, safety and wellbeing of our children:

- Special Educational Needs and Disability
- Accessibility plan
- Medical Needs
- Child Protection and Safeguarding
- Anti-bullying policy
- Behaviour policy
- Attendance policy
- Equality statement

